



FUTURE JOB OPPORTUNITIES

Downeast LNG Seminar #2

Public Information Seminar Series
Robbinston Grade School

November 2005

PROJECT STATUS



- **Permitting process has begun**
- **Current status of studies underway**

TONIGHT'S AGENDA

6:00-9:00 PM



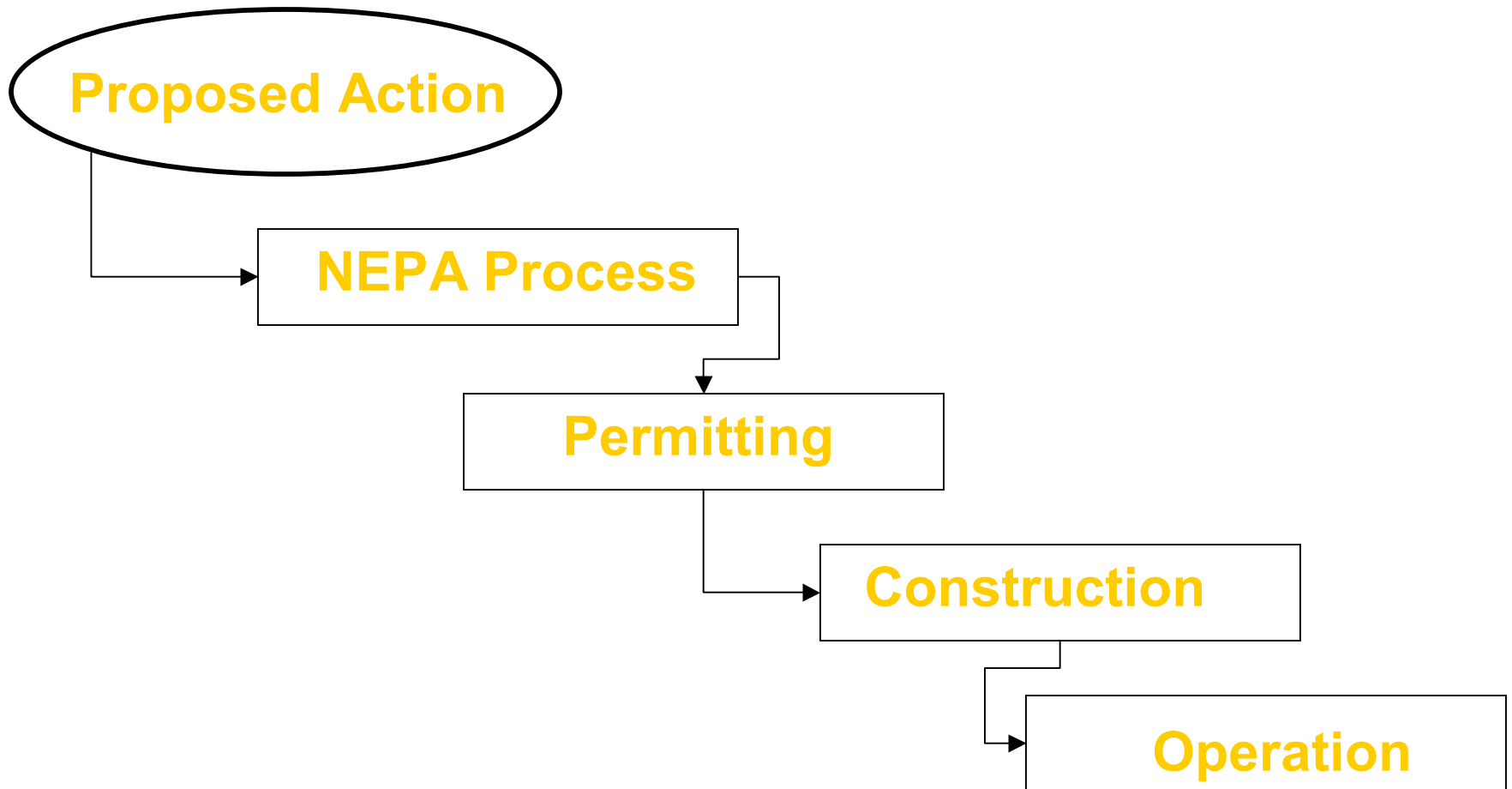
- **WELCOME**
- **Project Status**
- **Overview of Downeast LNG Job Opportunities**
- **Construction Jobs**
- **Plant Operations Jobs**
 - - **Stretch Break**
- **Tugboat Construction and Pilotage**
- **Community Education and Industry Services**
- **OPEN Q&A SESSION**

OVERVIEW OF DOWNEAST JOB OPPORTUNITIES

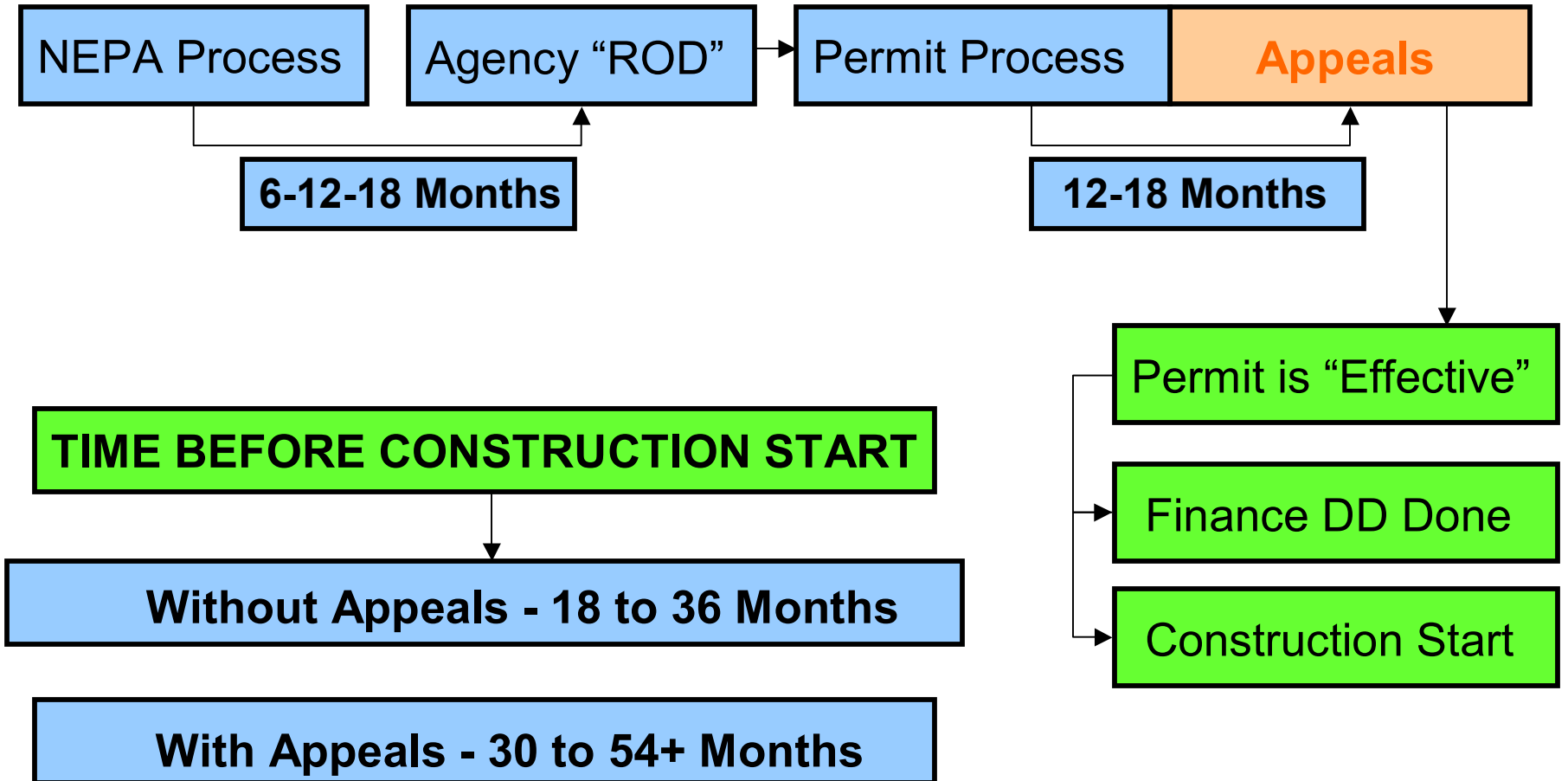


- **THE PROJECT DEVELOPMENT PROCESS**
- **ESTIMATED TIMELINES**
- **ALL CONTINGENT ON SUCCESSFUL PERMITTING IN A TIMELY FASHION**
- **HIRING MILESTONES AND PHASES**
- **FIRST OPPORTUNITIES – LOCAL OFFICE**

The Project Development Process



The Review Process Schedule



What's That Mean For Downeast LNG?



2005 and 2006

- Environmental, Engineering and Ship Transit Studies and Critique
- Preparation of Detailed Plans and Analyses
- Plans and Study Results Submitted to Federal and State Agencies
- Public Meetings – Downeast LNG and FERC

2007

- NEPA Process with Environmental Impact Statement
- Other Federal and State Permit Hearings
- {Maybe, Just Maybe.....Early Start of Construction}

2008

- Start Construction

2010-2011

- Operations Start (maybe earlier – in 2009??)

But – The Employment Plan Must Start Now



- **First Job Opportunities -**
- Local Office Support
- Pre-Construction Support

To Hire Locally At A Maximum Level –

- Must Assure Maximum Opportunity for Plan Ahead Training
- Allows Optimal Choice of Interest
- Establish Effective Employment Base Potential HERE
- Applications, Confidentiality, “Interest” Form Tonight

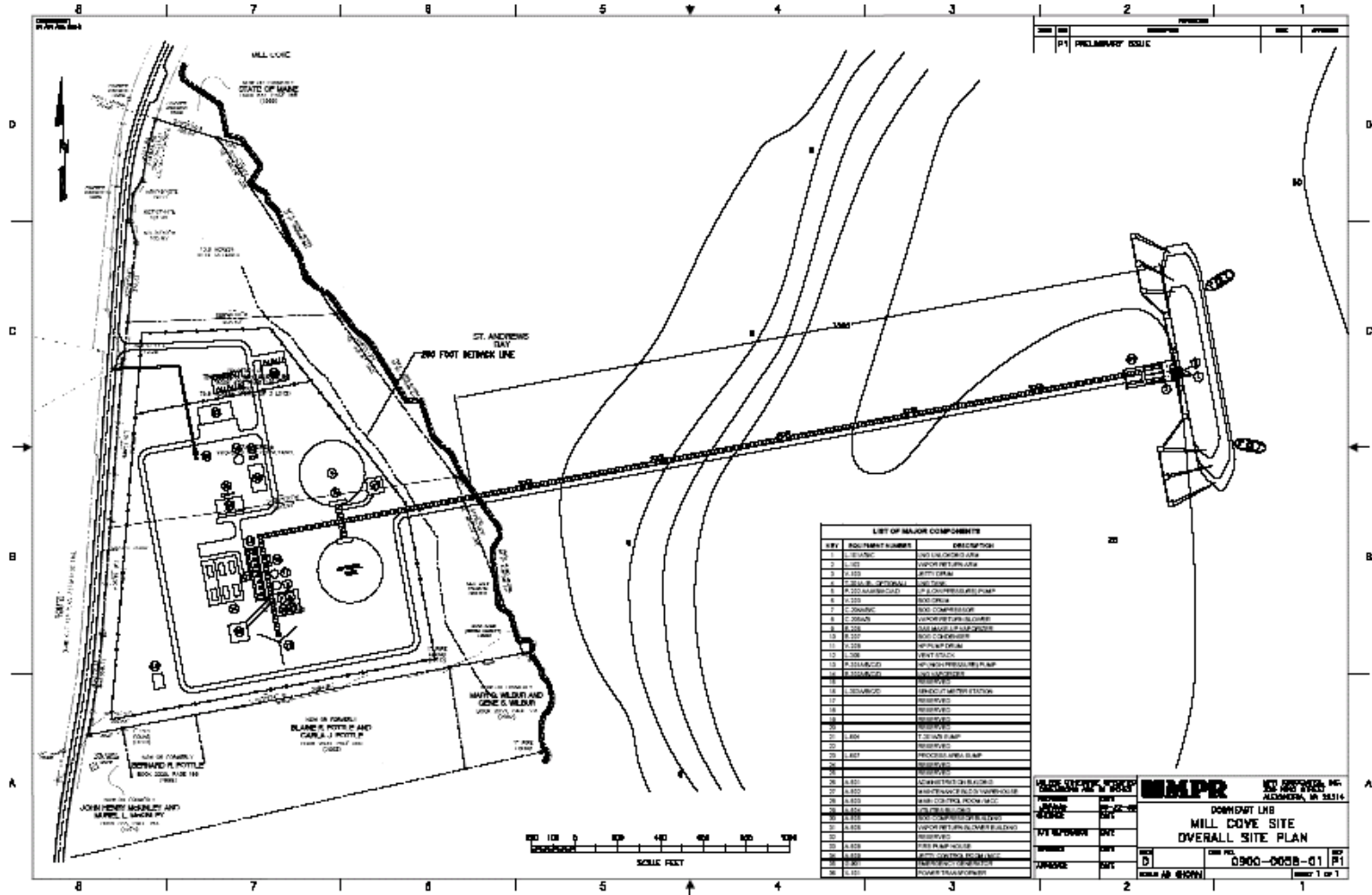


PLANT CONSTRUCTION

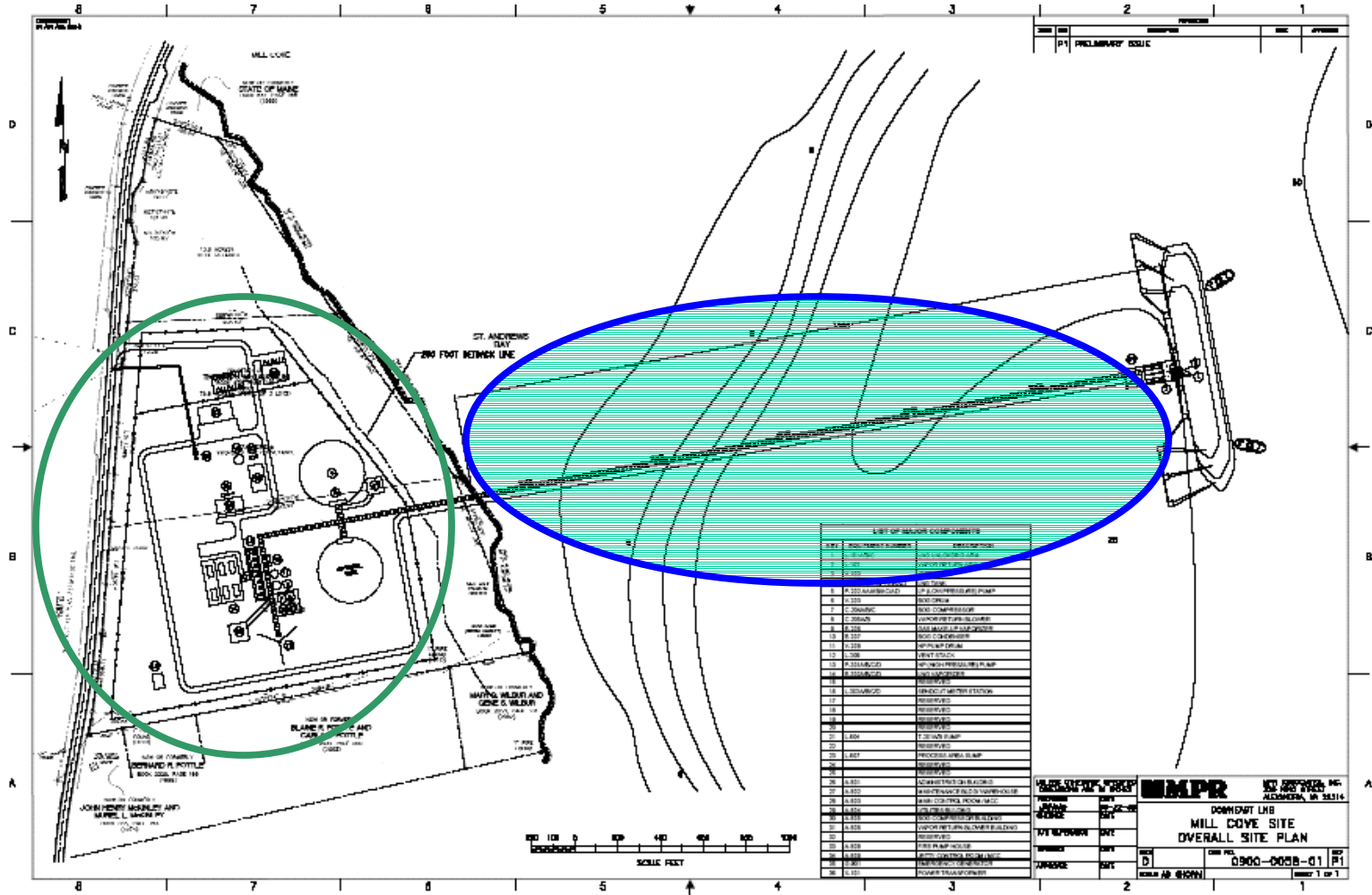


- **CONSTRUCTION PLANNING**
- **CONSTRUCTION HIRING BY EPC CONTRACTOR**
- **JOB TYPES AND NUMBER**

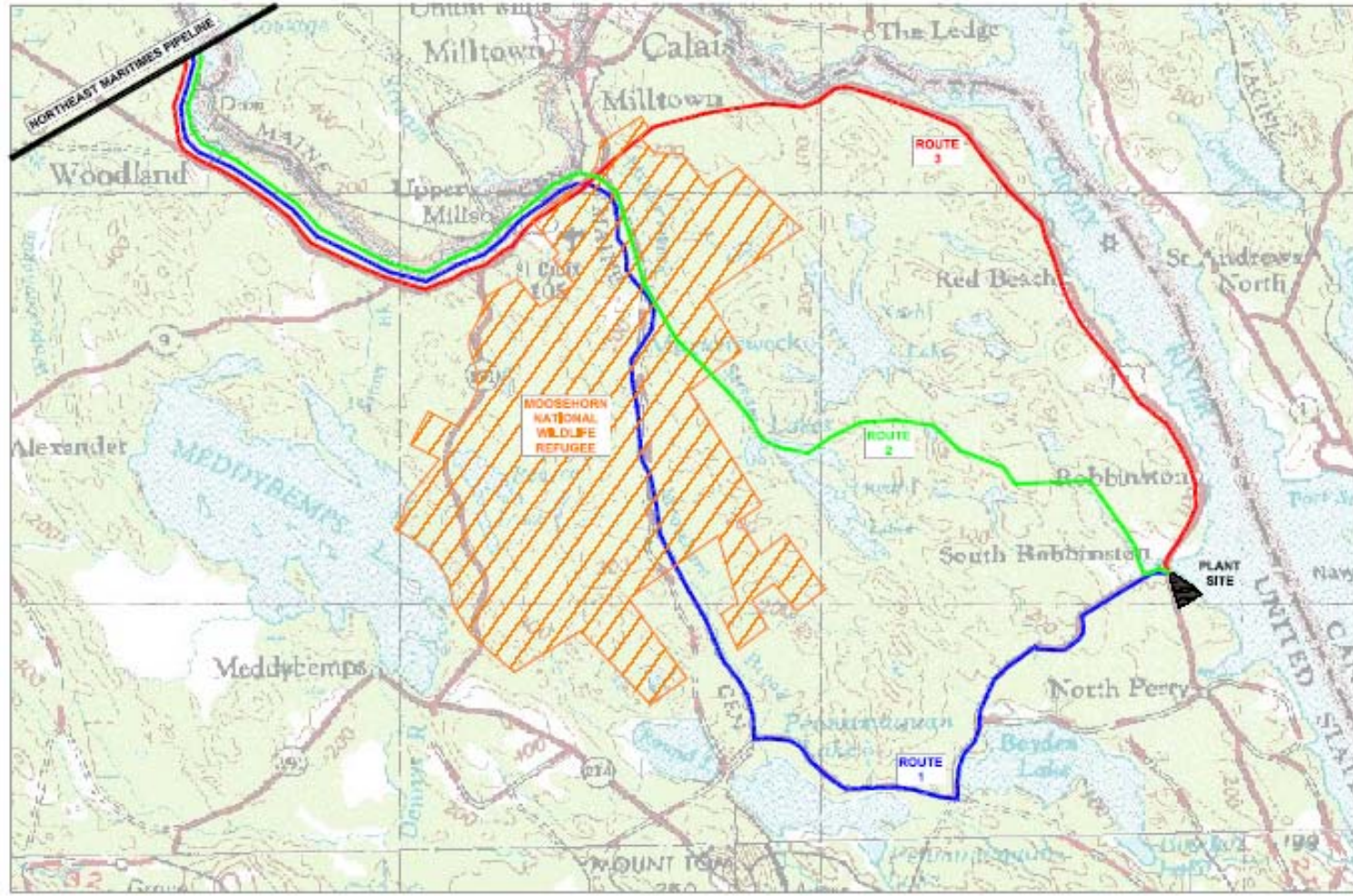
CONSTRUCTION WILL INCLUDE THE PLANT AND PIER



THE PLANT AND PIER AREAS



And Also the Pipeline!



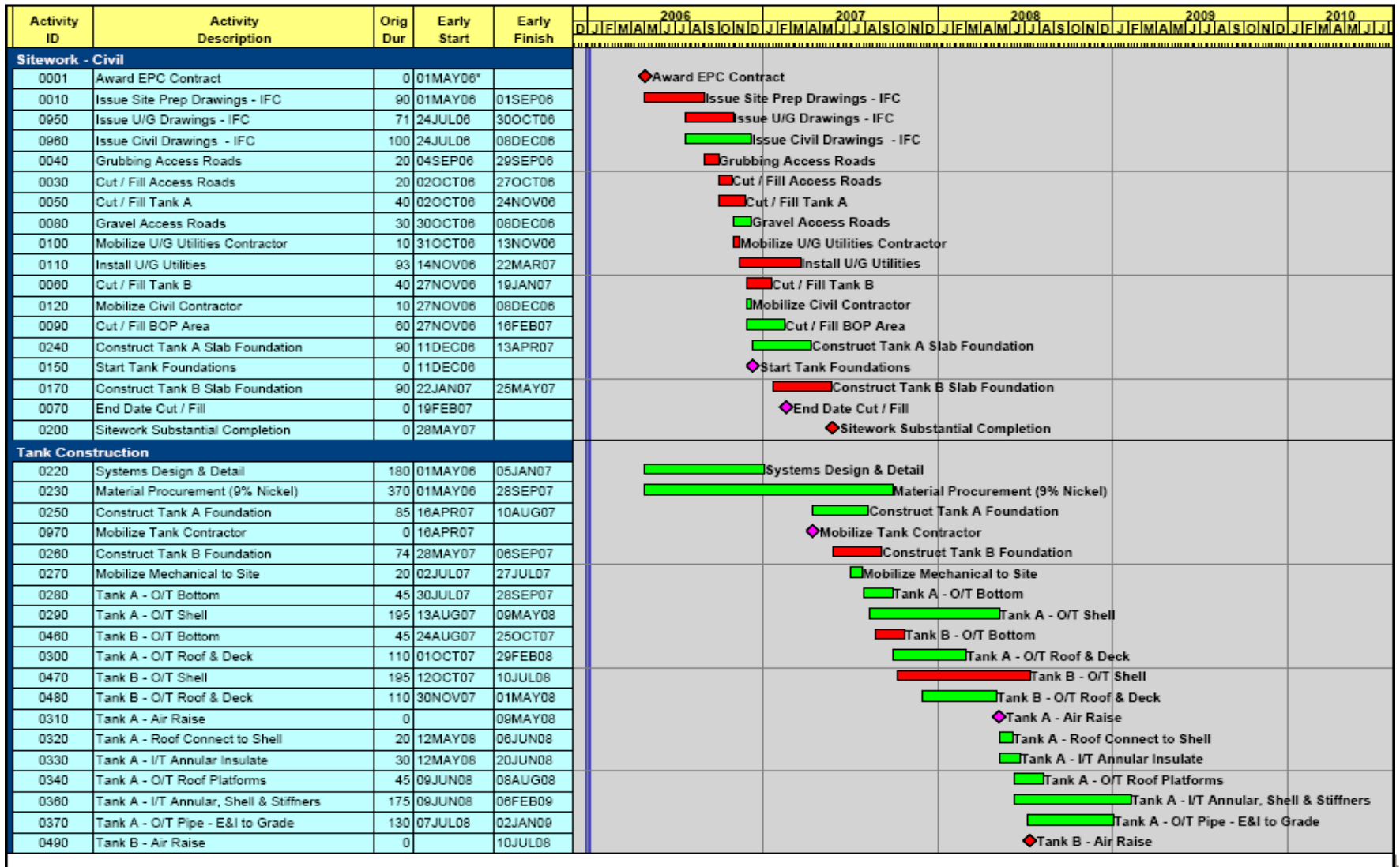
Construction Phasing



- **Total time for land preparation for the entire site**
(commencing EPC award through substantial completion of land prep)
= approximately 13 months.
- **Total time for land preparation to commence installation of LNG tank foundation slab**
(commencing EPC award)
= approximately 7 months
- **Total time for installation of LNG storage tank foundation slab**
= approximately 4 months
- **Tank Construction and Testing for Balance of Schedule**
= 12 Months

TOTAL TIME = 36 Months

EPC Contract Award to Tank Completion



PLANT CONSTRUCTION JOBS



| | | | |
|-----------------------------|----|--------------------------|----|
| ■ General Foremen | 5 | ■ Pipefitters | 20 |
| ■ Foremen | 18 | ■ Welders | 28 |
| ■ Carpenters | 33 | ■ Electricians | 11 |
| ■ Rodbusters | 18 | ■ Instrument Fitters | 4 |
| ■ Concrete Finishers | 8 | ■ Instrument Technicians | 1 |
| ■ Light Equipment Operators | 10 | ■ Insulators | 9 |
| ■ Heavy Equipment Operators | 3 | ■ Sheet Metal Workers | 9 |
| ■ Riggers | 15 | ■ Painters | 11 |
| ■ Ironworkers | 25 | ■ Helpers | 60 |
| ■ Millwrights | 16 | ■ Laborers | 28 |

Although the above numbers add up to 332, the individual crafts will peak at different times during 3-year construction.

PIER CONSTRUCTION JOBS



- We anticipate a 20-month construction period
 - Starting about 6 months after award to the contractor.
 - Based on an assumed 5 day work week. If a 6 day workweek is used, the schedule could be shortened.
- A maximum of 60 personnel will be needed for the construction of the marine structures (topside equipment & piping excluded)
 - Laborers, dock workers, tug crews.
- Activities/crews would cover:
 - rock socket drilling,
 - placement of precast concrete elements,
 - placement of cast-in-place concrete for the marine structures, including tug/marine support and
 - onshore laydown/materials receiving yard operations

PLANT OPERATIONS JOBS



- **ARTHUR RANSOME, CH-IV**

Plant Manager at EcoElectrica...3 Years

Total 6 Years of EcoElectrica Involvement

Teeside Natural Gas Power Station – Operations Manager

22 Years in the Energy Industry

- **TYPICAL LNG IMPORT TERMINAL ORGANIZATION CHART**
- **TYPES OF JOBS**
- **TRAINING REQUIREMENTS**

BREAK



- **10 Minute Stretch**
- **Snacks in the Back!**

TUGBOAT CONSTRUCTION AND PILOTAGE



Captain Robert (Bob) Peacock

Eastport Pilots Association

COMMUNITY EDUCATION AND INDUSTRY SERVICES



Darin McGaw

Assistant Dean for Student and Community Affairs

- Darin has worked for Washington County Community College for the past 13 years.
- He was born and raised in Washington County and has been active in Workforce Development in the area.
- He currently serves on the Workforce Investment Board of Washington and Aroostook counties and Co-chairs the Washington County Transition Team for unemployed workers.
- One of his primary responsibilities at the College is to provide for the training needs of Washington County businesses.

Community Education and Industry Services, WCCC



Workforce Development and Training



- Overview of Washington County Community College (WCCC)
- Ability to staff plant using local talent
- Training available for construction and operations jobs
- Hosting job fairs

